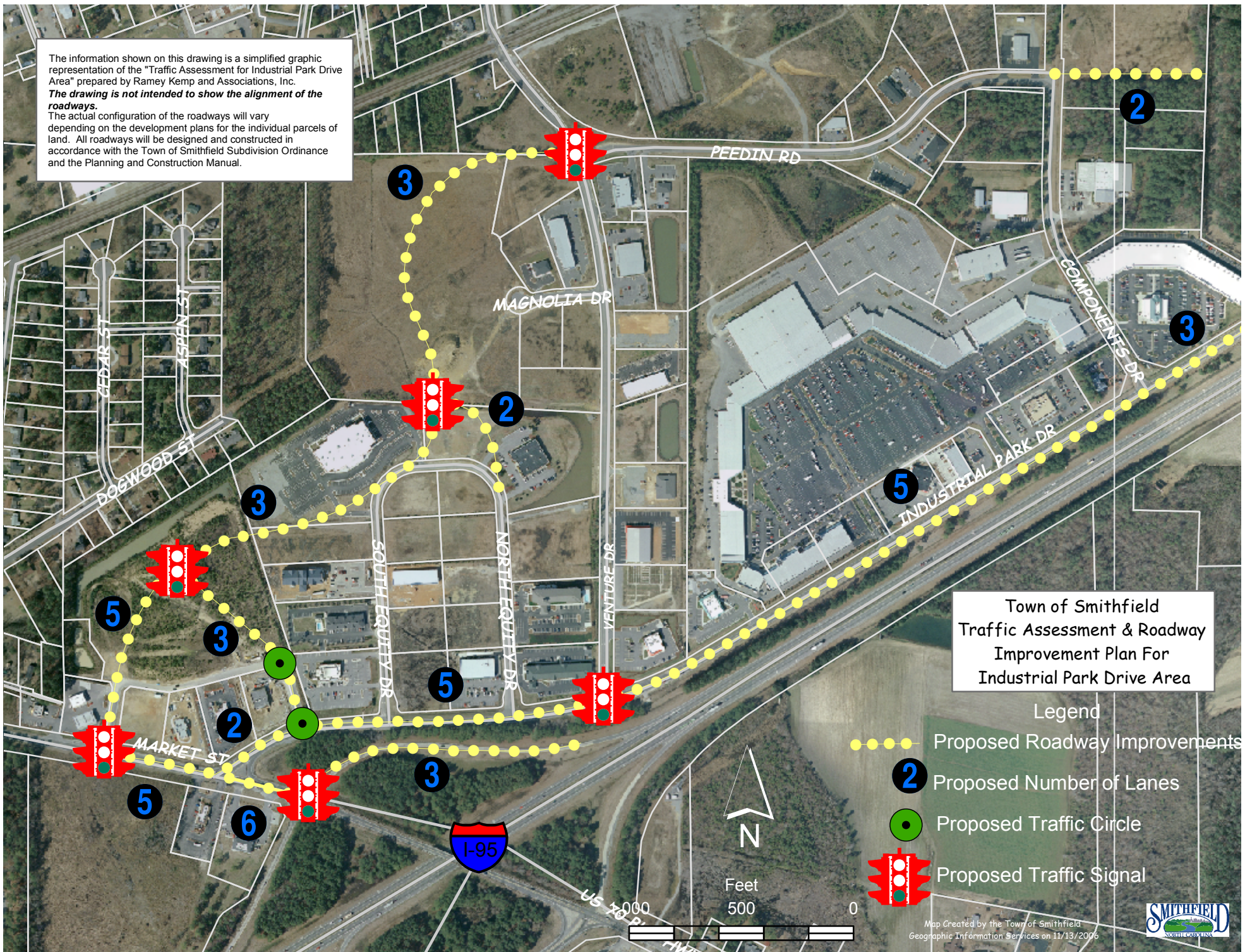




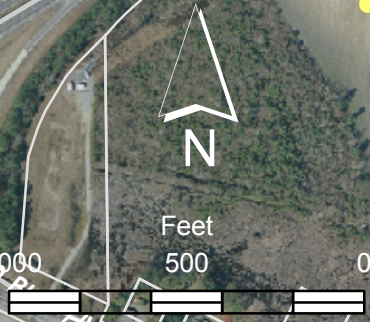


The information shown on this drawing is a simplified graphic representation of the "Traffic Assessment for Industrial Park Drive Area" prepared by Ramey Kemp and Associates, Inc. **The drawing is not intended to show the alignment of the roadways.** The actual configuration of the roadways will vary depending on the development plans for the individual parcels of land. All roadways will be designed and constructed in accordance with the Town of Smithfield Subdivision Ordinance and the Planning and Construction Manual.



Town of Smithfield
Traffic Assessment & Roadway
Improvement Plan For
Industrial Park Drive Area

- Legend
-  Proposed Roadway Improvements
 -  Proposed Number of Lanes
 -  Proposed Traffic Circle
 -  Proposed Traffic Signal



Map Created by the Town of Smithfield
Geographic Information Services on 11/13/2006

